

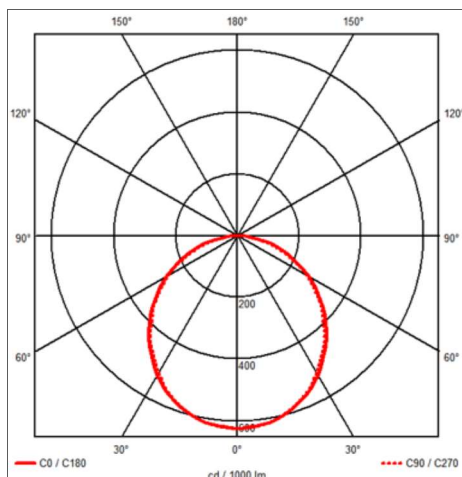
Solar Area / Street LED



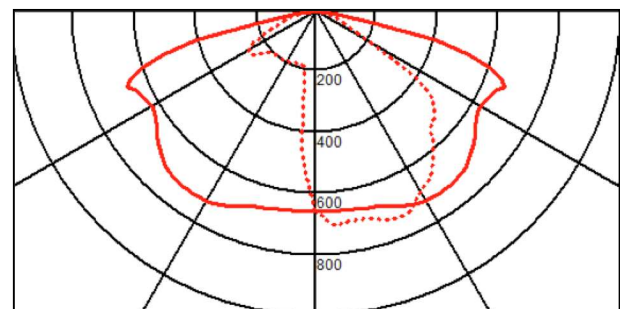


FACT FILE:

| | Fact file |
|---------------------------------|--|
| Solar panel | Polycrystalline 90W or 120W Operating T -40 to +88C |
| Battery Type | Lithium Ion Phosphate batteries – with overcharge control – undervoltage limit control. |
| Light quality | Minimum 80CRI (standard) higher can be requested. 5000K standard – 3000K and 4000K can be requested |
| Lumen outputs | Initial for 14W - 1800 lumens Initial for 28W – 3600 lumens |
| Body construction | Light fitting - LM 6 grade aluminium – powder coated. Pole bracket – steel hot dip galvanised |
| Weights – total | Single light 14W – 18kg Double light 14W (28W total) 28kg Single light 28W – 22 For windage – refer to drawing on data sheet. |
| IP rating | IP 65 |
| Environmental temperature range | -25C to + 48C |
| Special pole requirements | Due to low weight of light fittings – standard lighting poles may be used – please refer to our 6m pole as an example. |
| Note | We reserve the right to alter information at any time – please always check with us first. |

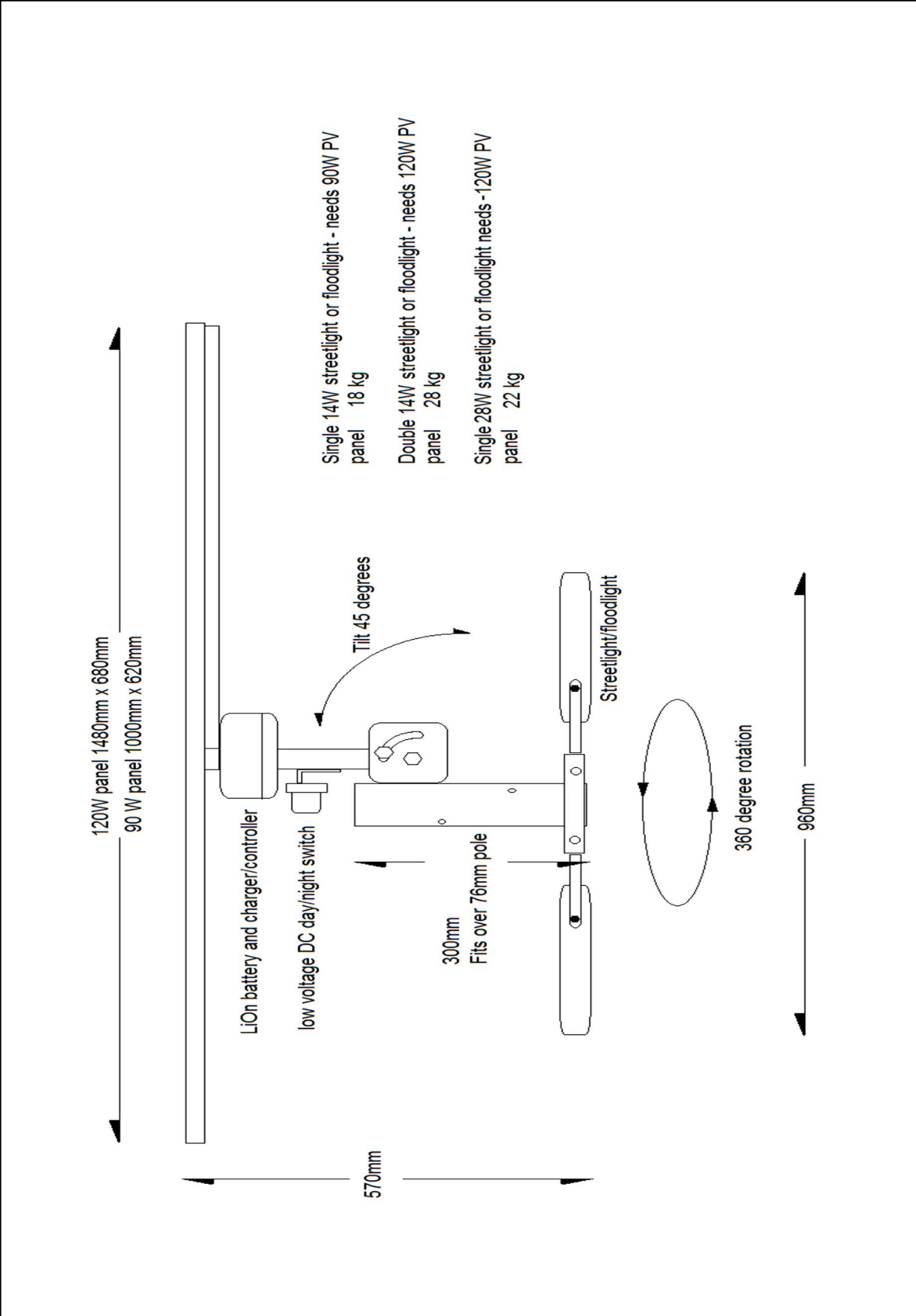


Symmetrical –
No lenses

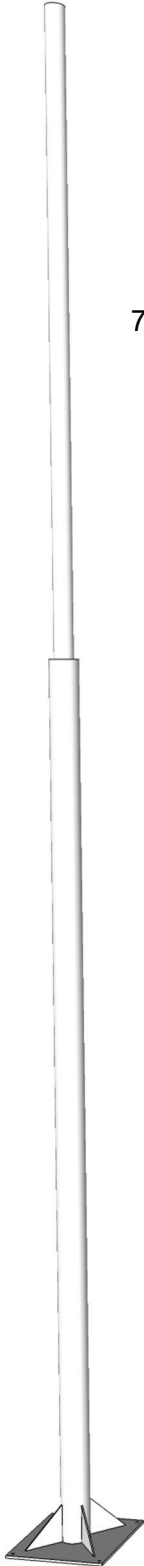


Lensed option

Lumen values are as measured at source – on the PCB – not exiting light fitting.
Due to the fast pace of development – values are subject to change at any time
and without notice.



Typical Pole design – for 2 x 14W option.



76mm diameter x 2,5mm thick – up to 2,5m high.

114mm diameter x 3mm thick – up to 5m high

