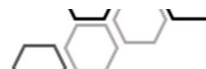
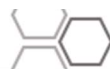
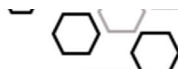
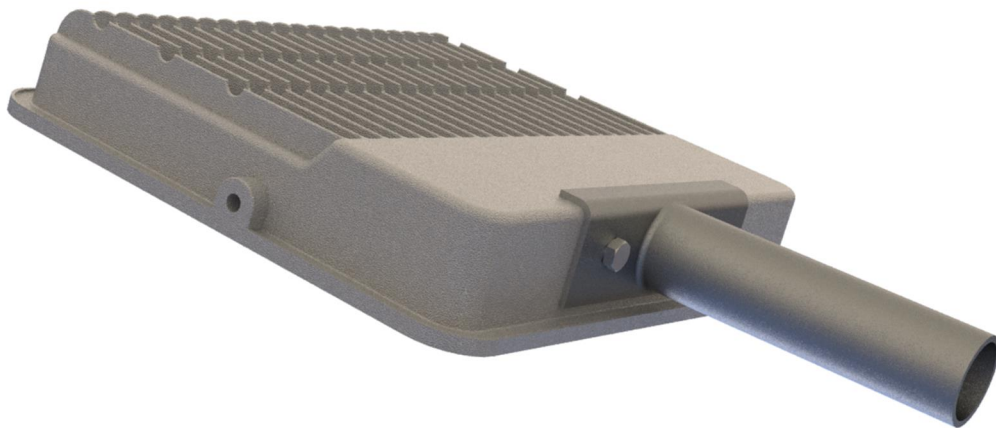


Eco Cannon alum 20W40W60W75W100W150W200W  
LED Flood / Bulkhead / Streetlight



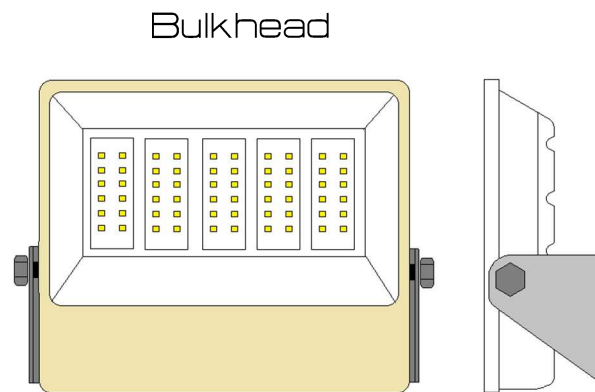
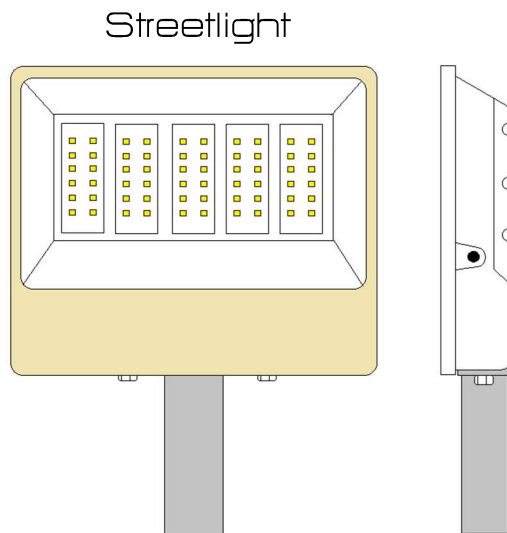
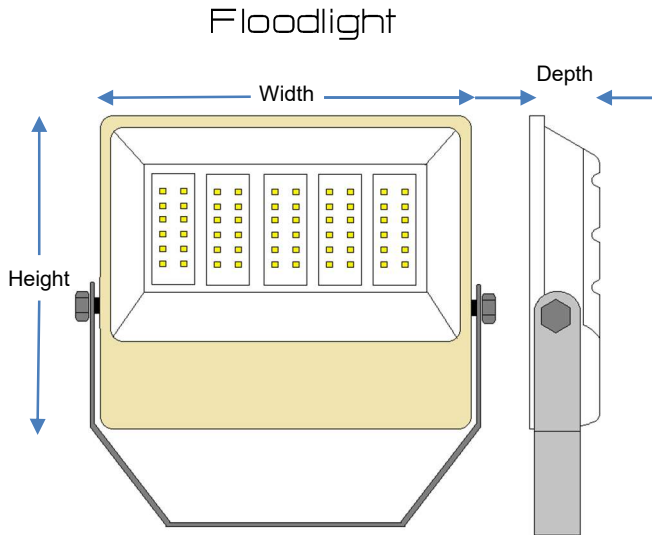


FACT FILE:

<b>Fact file</b>	
Body construction	LM6 Marine grade aluminium/ Yoke and Bulkhead bracket Stainless Steel 304 or 316 or HD galvanised
Lens type	4mm toughened glass
172 lumens per W range	
Size	320mm wide x 280mm high x 58mm deep
Wattage/Lumen options	20W – 3440 lumens on PCB 40W – 6880 Lumens on PCB 60W – 10320 lumens on PCB 75W – 12900 lumens on PCB 5000K or 4000K or 3000K – minimum CRI 80 (2700K and 6500K possible on request)
146 lumens per W range	
Size	380mm wide x 320mm high x 65mm deep
Wattage/Lumen options	100W – 14600 lumens on PCB 150W – 21900 Lumens on PCB 5000K or 4000K or 3000K – minimum CRI 80 (2700K and 6500K possible on request)
Size	435mm wide x 370mm high x 65mm deep
Wattage/Lumen options	200W – 29200 lumens on PCB 5000K or 4000K or 3000K – minimum CRI 80 (2700K and 6500K possible on request)
Lens options – Via Ledil lenses	Wide beam symmetrical – for general purpose floodlighting Ultra wide batwing – with either some forward or backward throw. Narrow beam 24 degree – for accent lighting
Supply voltage	230V AC 50HZ
IP rating	IP 65
Control Type	Standard - no control, on or off DMX control available DALI control available KNX control available
Power factor	Better than 0,9
Surge arrestor	10KV standard – 20KV on request.
IES files available	Yes

Lumen values are as measured at source – on the PCB – not exiting light fitting.  
Due to the fast pace of development – values are subject to change at any time  
and without notice.

Dimensions FILE:



Streetlight spigot ID is 44mm ID and 160mm long – with three m6 SS grub screws.

Width	Height	Depth	Weight
20W through to 75W all the same size			
320mm	280mm	58mm	2-3kg
100 and 150W			
410mm	360mm	65mm	3-5kg
200W			
435mm	370mm	65mm	5kg