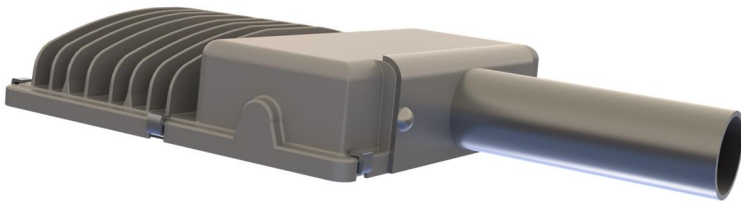


LED Flood/bulkhead Ultra 20W-50W

Giantlight

EFFECT LIGHTING



Streetlight option



Floodlight option



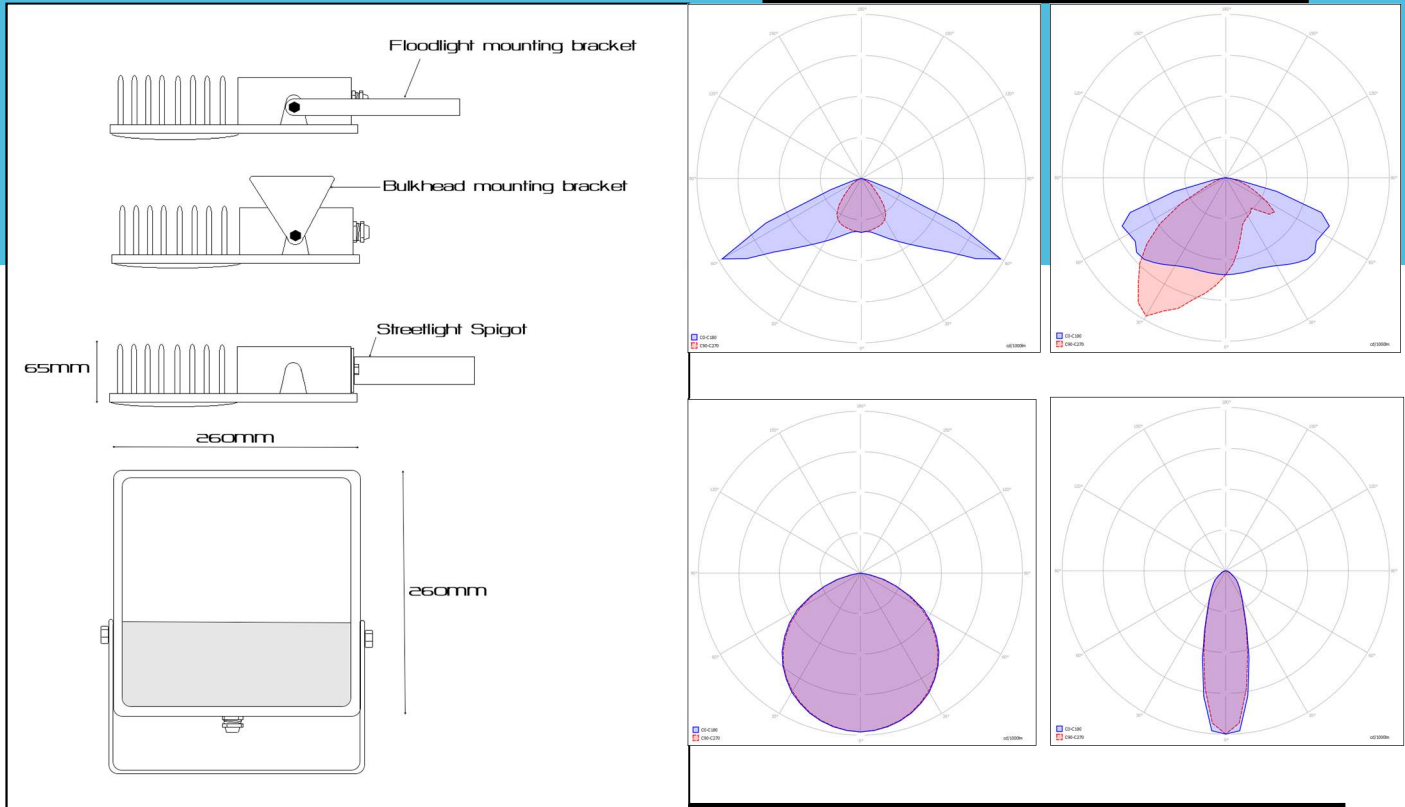
Bulkhead option

Giantlight (PTY) LTD

Tel: +27 11 704 1450 / +27 82 451 5506

169 Bush Telegraph Rd, Northlands Business Park North Riding Gauteng South Africa

www.giantlight.co.za email: otto@giantlight.co.za; wolfgang@giantlight.co.za



<b>Fact file</b>	
Body construction	Glass filled Nylon / Yoke and Bulkhead bracket Stainless Steel 316.
Lens type	3mm Polycarbonate (UV stabilised) toughened glass or impact modified Acrylic on request
LED type	Samsung or Seoul 3030
Lumen options	20W – 3520lumens on PCB 40W – 7040Lumens on PCB 50W – 8800Lumens on PCB 5000K or 4000K or 3000K – minimum CRI 80
Supply voltage	230V AC 50HZ
Wattage	20W/40W/50W
IP rating	IP 65
Control Type	Standard - no control, on or off DMX control available DALI control available KNX control available
Power factor	Better than 0,94
IES files available	Yes

Lumen values are measured at source, on the PCB – including power supply  
Values are subject to change at any time and without notice.